



128th Stated Meeting
of the Presbytery of Arkansas
Friday and Saturday, February 20-21, 2015
University of the Ozarks and
First Presbyterian Church, Clarksville

INFORMATIONAL FLYERS

PRE-PRESBYTERY WORKSHOP

4:00-5:30 p.m.

Friday, February 20, 2015

**Rogers Conference Center, University of the Ozarks,
Clarksville**

“GROWING IN GRACE AND GRATITUDE”

New Children’s Curriculum from PC(USA)

Workshop Leader Linda LeBron, certified Christian educator



Beginning in fall 2015, children of the church and those who love them will have a brand new and exciting way to explore and claim their lives together in Christ.

“Growing in Grace and Gratitude” is designed for children in preschool through grade 5 and is divided into preschool, kindergarten-second grade and third-fifth grade. Multiage version will be available, and English and Spanish language versions will be offered. It will be available in both print and online versions, with a quarterly leader guide, annual music CD and free resources for the home online and in an e-book.

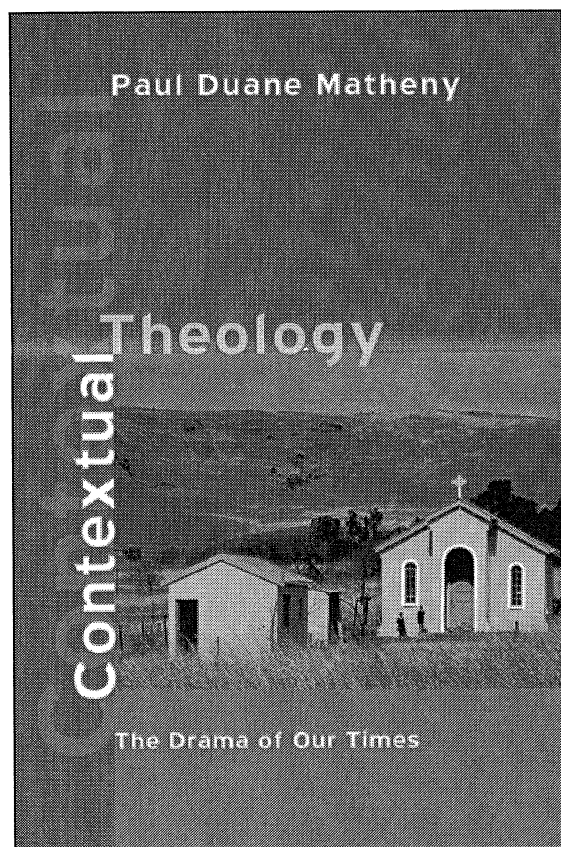
PICKWICK Publications

An imprint of WIPF and STOCK Publishers

199 West 8th Avenue, Suite 3, Eugene, OR 97401

Tel. (541) 344-1528 • Fax (541) 344-1506

Visit our Web site at www.wipfandstock.com



Contextual Theology

The Drama of Our Times

Paul Duane Matheny

It has been almost fifty years since theological educators first began talking about contextual theology. Today, in every country of the global South, their home schools require them to contextualize theological education and construct contextual theologies that would be helpful for their local churches. In spite of this expectation there are few helps available. The expectation is clear, but an understanding of the process by which this may occur is lacking. Educators often complain that they are led to adapt Western theology to their context rather than developing theology for their churches. Arguments for contextual theology are proposed often, but there has been little debate explaining and defending the methods involved. This book is intended to enter that debate and invite others who should help to appreciate the gravity of our situation and join the conversation.

The epicenter of Christianity has shifted to the Global South. Yet, contextual theology, which seeks to preserve the integrity of the faith, has not been met with generosity among scholars in the United States and Europe. This book intends to forge helpful bridges that encourage mutual regard to develop among scholars across the globe. The bubble of the Western academy needs to be breached.

PAUL MATHENY is Professor of Christian Theology and Ethics at Philippine Christian University and Union Theological Seminary, Philippines.

“This is a superbly written book that clearly outlines the vital importance of engaging in contextual theology for our time. Matheny reviews the historical background to contextual theology as well as various approaches. He explains how it works in practice, why contextual theology is good theology and why a healthy contextual theology will shape the future of theology by reviving biblical images and perspectives found in world Christianity. It is an accessible read and will be a very helpful resource for students, practitioners, and parishioners.”

—**Cathy Ross**, Lecturer in Pastoral Studies (Mission), Regent's Park College, University of Oxford

“This book is the best treatment of contextual theology I have read. Professor Matheny has written a succinct, informed, critical, balanced, and passionate defense of theology as a response to God's revelation in the concrete contexts of life. He shows that to take context seriously in conversation with the Christian 'text' is not a fad—to be either rejected or uncritically adopted—but a mark of all authentic and self-aware theologizing, whether in a seminary or favela.”

—**Ross Langmead**, Dean and Professor of Missiology, Whitley College in Melbourne College of Divinity, Australia

“For centuries, the doing of theology has been shaped by Western theological imperatives. Today the decline of institutional religion in the West, and the extraordinary growth of the church of the South mean a radical movement beyond such theologies is required. In *Contextual Theology* Matheny sensitively examines how a reassessment of the relationship of gospel to cultural context can advance such a critical and necessary development.”

—**Susan Smith**, Lecturer Emeriti in Theology and Adjunct Faculty Member, University of Auckland, New Zealand

“There are many books crying for the church to become more contextualized and less Western, but very few books that demonstrate how to use contextual methods to accomplish that task, to think theologically and act missiologically in different cultural contexts. Far from advocating catchy slogans and trendy techniques to create contextualized expressions of Christianity, Paul Matheny underscores the importance of relying on Scripture and engaging ecumenically in demonstrating the universal nature of Christianity that connects followers of Jesus with each other across space and time while living out their faith in particular local settings. We've been waiting a long time for a book like this and Matheny brilliantly delivers.”

—**Darrell Whiteman**, The Mission Society

ISBN 13: 978-1-60899-967-5 / \$18 / 146 PP. / PAPER

Order via phone (541) 344-1528, fax (541) 344-1506 or e-mail us at orders@wipfandstock.com.

Presbytery of Arkansas Mission Support 2015

Making Christ Visible for Generations to Come



Through Common Commitment

Called by Christ, we share the promise of our baptism and the hope of God's coming realm. The Presbytery of Arkansas seeks to make visible the body of Christ in Word and Sacrament, through teaching, fellowship, breaking of bread, prayer and acts of compassion. Trusting the Holy Spirit's guidance, we work to order our life together with glad and generous hearts.

Through Sharing Gifts

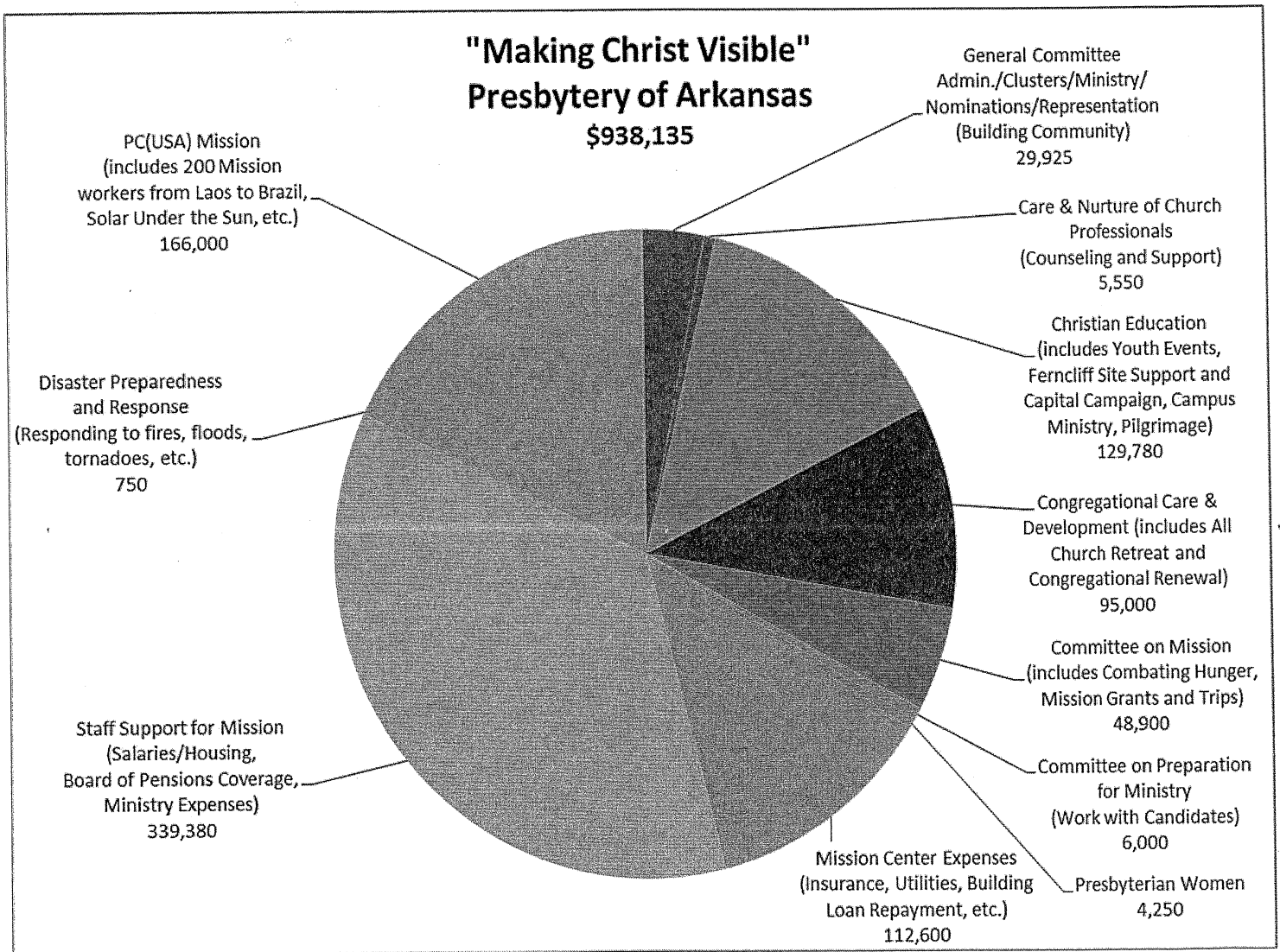
- Upbuilding campus ministries through UKirks
- Growing youth ministry and disciple making
- Offering an up-to-date, staffed Resource Center
- Leadership Development through Presbytery retreats
- Providing staff support to congregations and leaders
- Assisting congregations in discerning mission and vital life
- Grants to New Worshiping Communities
- Promoting Presbyterian Pilgrimage
- Encouraging Presbyterian Women in mission
- Supporting Lyon College and the University of the Ozarks
- In support of Vera Lloyd Presbyterian Family Services
- Ensuring counseling services for Presbytery members
- Enhancing the ministries of Ferncliff
- Encouraging hands-on mission through trips
- Joining in PCUSA national and international mission
- Assisting with Disaster Recovery

The Presbytery of Arkansas gives over 10% of all benevolent contributions to mission beyond itself.

"There are varieties of gifts but the same spirit... God works in all things, in all persons. But to each one is given the manifestation of the Spirit for the common good."
1 Corinthians 12: 4 ff.


As a member congregation or friend of the Presbytery of Arkansas, please consider your support of the mission to which Christ is calling us. Then, fill out an estimate of giving card representing your session's planned giving for our shared ministry in 2015. Individuals are also invited to make estimates of giving. All gifts are welcomed and appreciated. Upon completion of your estimate of giving card, please return it to:

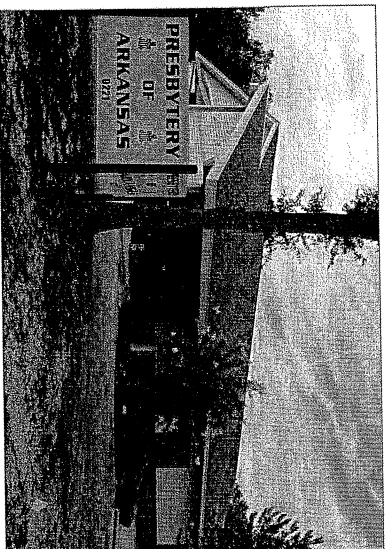
The Presbytery of Arkansas
 c/o Kenneth Rich, Director of Mission Support
 9221 N. Rodney Parham Road
 Little Rock, Arkansas 72227



are you wanting to ...

- train elders & deacons
- identify capable speakers
- revitalize Sunday School
- enhance parenting skills
- prepare a stewardship campaign
- brainstorm youth programming
- promote camps & conferences
- launch a day-care center
- save on curriculum costs
- direct Vacation Bible School
- inspire youth in mission
- create a small group
- facilitate basic bible study
- lead comprehensive bible study
- plan teacher training
- develop a confirmation class
- simply think outside the box

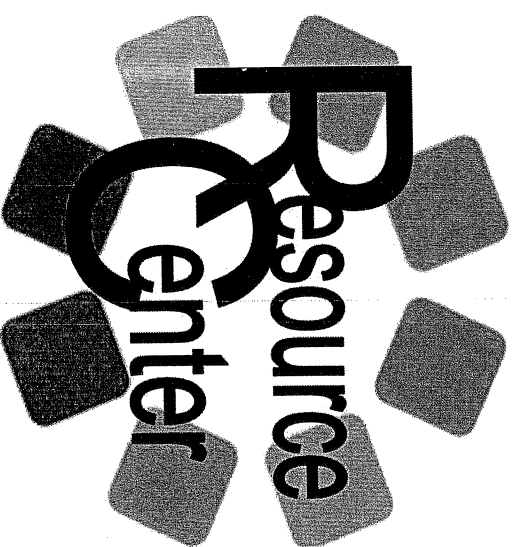

possibilities



The Presbytery of
Arkansas Resource
Center is funded by
your congregation's
benevolent giving to
Presbytery.

NiAnn Thompson, director
Certified Christian Educator
Presbytery Office
corner of Reservoir & N Rodney Parham Rd
9221 North Rodney Parham Road
Little Rock, Arkansas 72227
501.663.2424 ext 104
FAX 501.224.2429

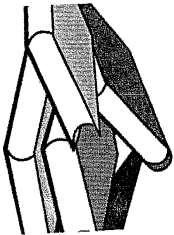
PRESBYTERY
OF ARKANSAS



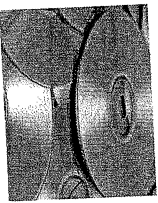
*Come discover a
treasure trove of
ideas for your
church*



we can help with ...



Adult Ministry,
Bible Study,
Children's
Ministry,
Confirmation, Curriculum
Development, Discipleship,
Devotionals, Earth Care, Elder
Training, Evangelism, Families,
Liturgical Resources, Mission
Studies, New Member
Orientation, Peacemaking,
Polity, Prayer, Preaching, Racial
Justice, Seasons, Sexuality, Small
Groups, Spirituality, Substance
Abuse, Church Ministry,
Stewardship, Symbols, Teacher
Training, VBS,
Worship, Young
Adult & Youth
Ministry



PRESBYTERY OF ARKANSAS RESOURCE CENTER

HOW DO I CHECK OUT RESOURCES?

- come by the resource center in Little Rock
- call the director for a consultation (Tuesdays-Wednesdays)
- request that materials be mailed
- visit the Resource Center table at Presbytery meetings & events
- visit our "On-Line Catalog:" go to presbyteryofarkansas.org choose "Resources," then, "Resource Center"

HOW LONG MAY I KEEP RESOURCES?

- four weeks is normal; renewals are possible
- lost & damaged resources must be replaced

HOW DO I RETURN RESOURCES?

- return resources to the Resource Center in Little Rock
- mail them to the Resource Center using the mail label provided
- drop off resources at the Resource Center table at meetings & events

HOW ARE RESOURCES FUNDED?

- we are part of the Presbytery's Christian Education committee budget
- consider a donation to fund resources & defray mailing expenses
- partnering to purchase resources is possible (check with the director)

we have a covenant relationship with Presbytery of the Pines

we are here to support you ...



The P.L.A.C.E

Presbytery Leadership Academy for Congregational Enrichment

Don't miss this
Leadership Training
Event!

Saturday,
August 8, 2015

Second Presbyterian Church
Little Rock

Special Feature: PC(USA) Pathways

Youth

Adult Youth Workers

Explore God's path for your lives in a mix of leader development, discipleship exploration, recreation, and worship.

College-age
Young People

Collegiate
Ministry Leaders

Watch for details! Program will run concurrently with The PLACE but separate fees and registration.

The Power of Community!
Dozens of workshops for leaders, teachers, officers, and pastors designed to train and energize your congregation.

plus...

- ★ Mini-Fernduff for Kids
- ★ Preschool Childcare available
- ★ Displays & PC(USA) Bookstore

Saturday, August 8th

- 9:30 Registration, displays, and bookstore
- 10:30 Workshops – Session A
- 11:30 Lunch with Community Building
- 12:35 Workshops – Session B
- 1:45 Workshops – Session C
- 2:45 Workshops conclude.

PC(USA) Bookstore open until 3:30.

New this year: Online registration and payment will be available:

\$15 per adult by July 29 (includes lunch)

\$20 per adult after July 29 (includes lunch)

Childcare: \$10 per child/maximum \$25 per family (bring sack lunch)

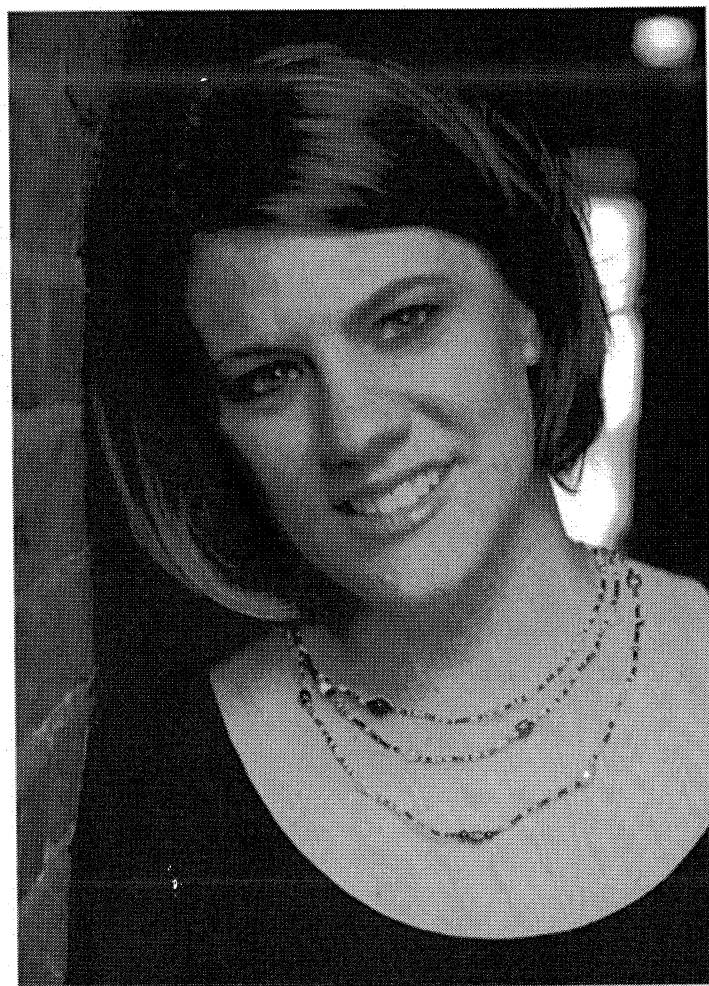
2015 COTHAM LECTURES
WESTOVER HILLS PRESBYTERIAN CHURCH

Rachel Held Evans



May 3, 2015
10:25 am Worship
7:00 pm Lecture

May 4, 2015
7:00 pm Lecture



*Blogger and New York Times
Best Selling Author of
Evolving in Monkey Town and
A Year of Biblical Womanhood*

for more information please visit
www.westoverhills.org or call 501.663.6383

Keynote Speaker

Jane Lee Wolfe has spent her life predominantly in the spirituality field and in the human rights arena. A former president of the World YWCA, her human rights commitments have been focused principally on women's rights around the world and on peace and justice initiatives in the middle east and elsewhere, including representing the Episcopal church at the United Nations on the Question of Palestine. Her spirituality jobs include Assistant to the Episcopal Bishop of Arkansas for Spiritual Formation, Director of Christ Church Center for Religious Studies and Practice, and visiting scholar at St. George's College, Jerusalem. She is currently director of Bog Chapel, Inc., a spiritual health and fitness not-for-profit in Woodstock, VT, where she also resides. Contact info: janeleewolfe@gmail.com, 802-457-3999, PO Box 5, Woodstock, VT 050591

Presbytery of Arkansas Spring Retreat

sponsored by
Congregational Care and Development Committee
Presbytery of Arkansas
9221 N. Rodney Parham Road
Little Rock, AR 72227

Presbytery of Arkansas Spring Retreat

Unlocking the Door

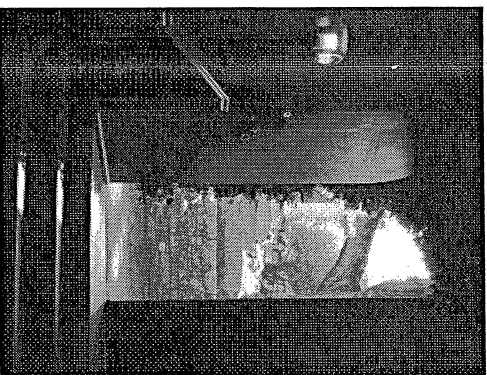
A Lenten Journey of Spiritual Renewal

Thursday, March 5th

through

Saturday, March 7th

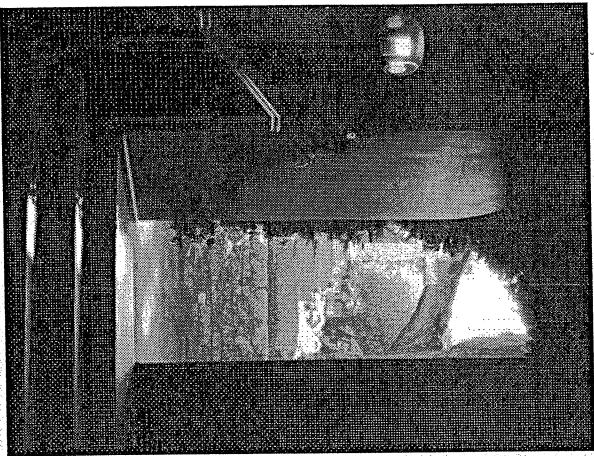
*Ferncliff Camp and
Conference Center*



This retreat is for YOU! Presbyterian or not, church-goer or not, Teaching and Ruling Elder or not, Lay Academy or not, Christian Educator or not.

Invitation to participate in Unlocking the Door:

We are better able to face challenges and uncertainties that are part of all life when the connection to our Source is open.



Do you ever feel like you have been locked out of your spiritual house where you live easy and hang out with God?

Or is the door sometimes too heavy to open or blocked in some way? Would you like to get back in?

Come learn ways to unlock and unblock the door... Come celebrate being home with God.

Schedule of Events

Thursday, March 5, 2015

- 10:00 Optional individual sessions (\$75 for 50 minutes) with Jane to be scheduled through Michael Vinson (mvinson17@gmail.com)
- 4:30 Registration Begins
- 6:00 Dinner
- 7:00 Worship
- 8:00 Beginning Session

Friday, March 6, 2015

- 7:30 Breakfast
- 9:00 Worship
- 9:30 Morning Session
- 12:00 Lunch
- 1:00 Afternoon Session
- 3:00 Free/Contemplative Time
- 6:00 Book Store, etc.
- 7:00 Late Registration/Arrivals
- 8:45 Dinner
- 8:45 Evening Session
- 8:45 Vespers and Communion

Saturday, March 7, 2015

- 7:30 Breakfast
- 8:45 Morning Prayer
- 9:00 Closing Session
- 12:00 Lunch & Closing Benediction — Dining Hall

This event is sponsored by the Congregational Care and Development Committee of the Presbytery of Arkansas.



For more information, contact Teaching Elder Jeff Price at 501-868-5848.

Unlocking the Door REGISTRATION

March 5-7, 2015

Name _____

Address _____

City/State/Zip _____

Email _____

Preferred Phone _____

___ Cell ___ Home ___ Other

Roommate Preference _____

Church/Town _____

Dietary / Housing Needs _____

Accommodation Preferences: (circle one)

Lodging and meals
 Cabin Double Single* Commuter

Entire _____ Meals only _____

Event \$95 \$120 \$156 \$90

Thur Eve _____

& Fri only \$75 \$92 \$46

Fri Eve & _____

Sat only \$75 \$92 \$46

*Single occupancy is available on a limited first-come, first-served basis.

There is NO LIMIT on the number of participants from any one church. All are welcome.

Visit us on Facebook at
www.facebook.com/ARPressSpringRetreat

Register online through Ferncliff at
<http://goo.gl/S70V4p>

Or mail this form and your check to
 Ferncliff Camp and Conference Center
 1720 Ferncliff Road
 Little Rock, AR 72223